

## CUSTOMER INFORMATION

Customer name \_\_\_\_\_ Date \_\_\_\_\_

Phone # \_\_\_\_\_

Email \_\_\_\_\_

Shipping Address

**SUIT TYPE** ☐ ONE PIECE ☐ TWO PIECE ☐ JACKET

**BODY TYPE** ☐ Small ☐ Medium ☐ Large ☐ X-Large



☐ **STANDARD 1 LAYER SFI 3.2A/1 \$599.95**

**Design Fee- \$100.00**

**JACKET PRICE \$350.95**

295 \*g/m<sup>2</sup> FR Cotton / \*TPP 10

☐ **STANDARD 2 LAYER SFI 3.2A/5 \$1299.95**

**Design Fee- \$100.00**

**JACKET PRICE \$650.95**

250 \*g/m<sup>2</sup> Meta Para Aramid Outer Layer

180 \*g/m<sup>2</sup> 100% Nomex Inner Layer

430 \*g/m<sup>2</sup> Total Suit Weight / \*TPP 22.6

☐ **PREMIUM 1 LAYER SFI 3.2A/1 \$649.95**

**Design Fee- \$100.00**

**JACKET PRICE \$450.95**

This material is only available in Black, Grey and White

240 \*g/m<sup>2</sup> FR Breathable Cotton / \*TPP 8.26

☐ **PREMIUM 2 LAYER SFI 3.2A/5 \$1499.95**

**Design Fee- \$100.00**

**JACKET PRICE \$750.95**

150 \*g/m<sup>2</sup> 100% Nomex Outer Layer

180 \*g/m<sup>2</sup> 100% Nomex Inner Layer

330 \*g/m<sup>2</sup> Total Suit Weight / \*TPP 21.6

## Standard Suit Options Included In Price - ALL INCLUSIVE

### SFI 1 Auto Racing Suit

#### Unlimited Embroidery

Custom Sizing

360 Degree Arm Gussets

Lower Back Stretch Panel

Crotch Stretch Panels

Choice of Quilting Stitch Color

Choice of Leg Design

Choice of clooar design

Standard Cotton FR Proban Outer Shell

### SFI 5 Auto Racing Suit

#### Unlimited Embroidery

Custom Sizing

360 Degree Arm Gussets

Lower Back Stretch Panel

Crotch Stretch Panels

Premium Knit Nomex Inner Lining

Choice of Quilting Stitch Color

Choice of Leg Design (Boot Cut or Cuffed)

Standard Meta Para - Aramid Nomex Outer Shell

Fluorescent colors included in price

**\*TPP Rating-** Divide this number by two to determine the number of seconds before a second degree burn occurs

**\*g/m<sup>2</sup>** Grams per square meter refers to the weight of the suit

## Additional Add Ons

**STRETCH PANELS** (Arm Gusset, Back and Crotch panels are included)

☐ Side Stretch Panels **[+\$50]**

☐ Arm Restraint D Rings **[+\$50]** (2 D rings per arm)

☐ Raceceiver Pocket **[+\$25]**

☐ Passport Pocket **[+\$25]**

☐ SAFETY X INNER LINER **[+\$100]** ADDS +70 GSM IN WEIGHT / ADDS TPP +7.5 (Upgrade on 2 layer suits only)

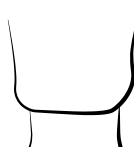
## Legging Styles



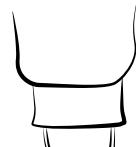
☐ Boot Cut



☐ Boot Cut w/Hooves



☐ Euro Cut



☐ Euro Cut w/Elastic

## Collar Styles



☐ Large w/ Velcro



☐ Banded V with Velcro

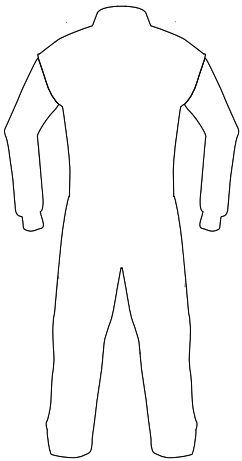


☐ Tapered V



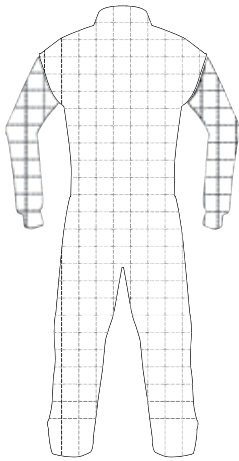
## Stitching Styles

Stitching color will match the main color of the suit unless otherwise specified.

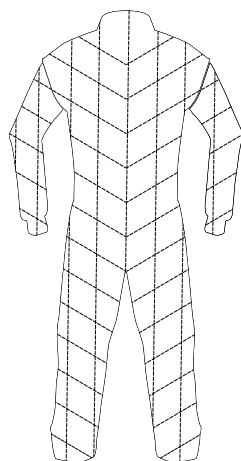


☐ No Stitching

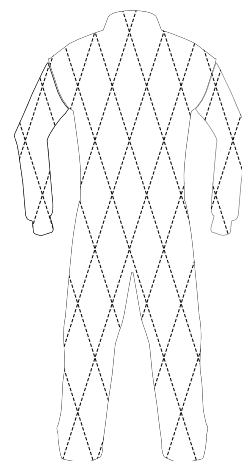
*(Single layer suit only)*



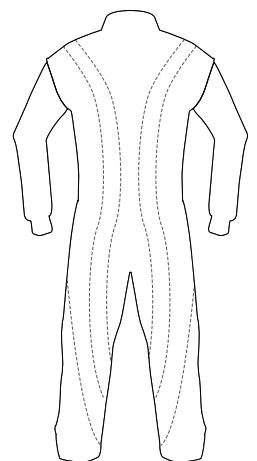
☐ Box Stitching



☐ Diagonal Stitching

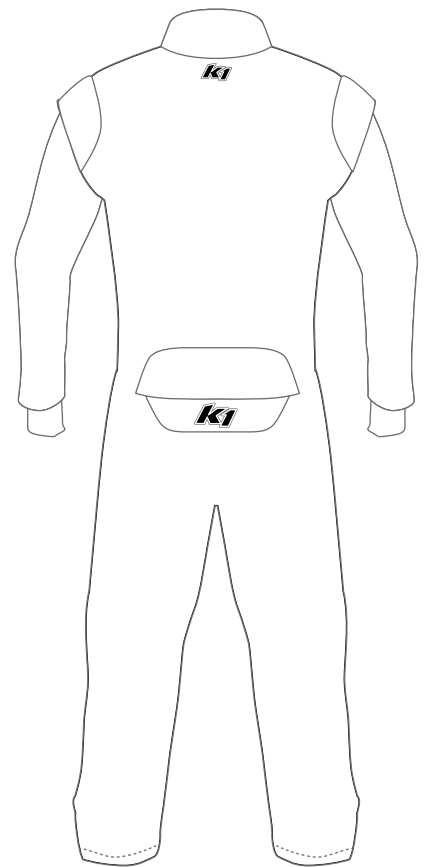
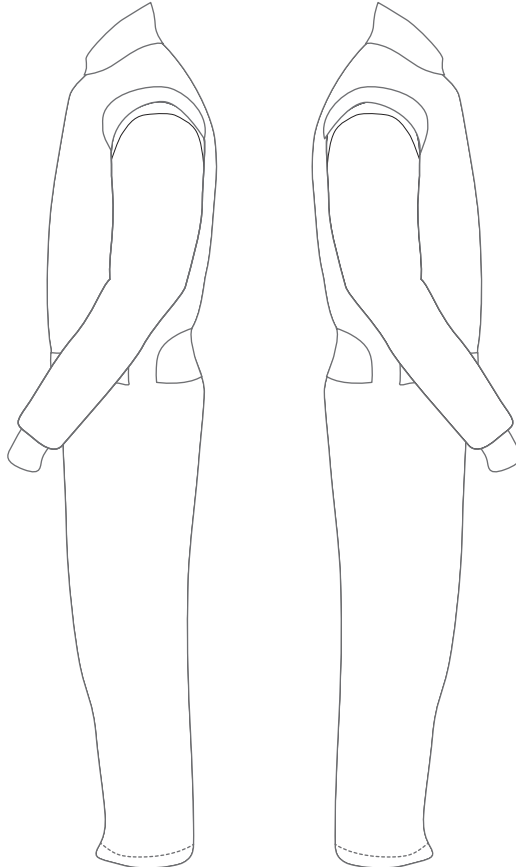
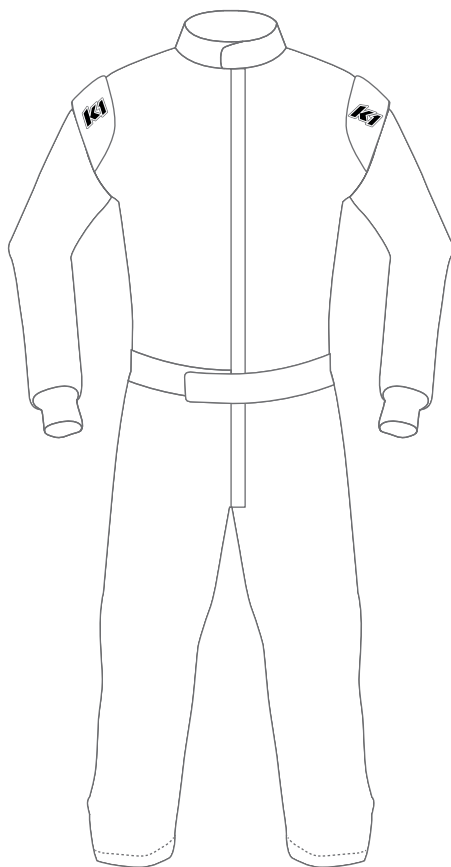


☐ Diamond Stitching



☐ Custom Stitching

## Logo Placement



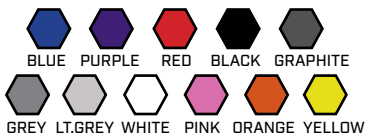
Write the name of the logo on the line and write the corresponding number inside a drawn box the size you would like the logo to be. If there are more than 6 per side, write the name of the logo on the drawing.

FRONT		LEFT SIDE		RIGHT SIDE		BACK	
1.	_____	1.	_____	1.	_____	1.	_____
2.	_____	2.	_____	2.	_____	2.	_____
3.	_____	3.	_____	3.	_____	3.	_____
4.	_____	4.	_____	4.	_____	4.	_____
5.	_____	5.	_____	5.	_____	5.	_____
6.	_____	6.	_____	6.	_____	6.	_____



## Suit Design Options

### Standard 1 layer suit colors



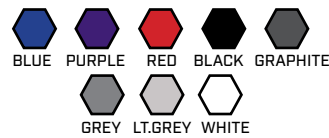
### Premium 1 layer suit colors

Breathable fr cotton only available in:



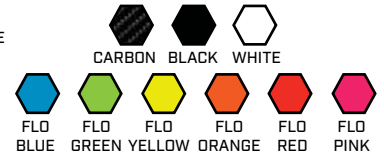
Standard 1 layer suit colors may be used as accent color options but it will be the heavier material

### Standard 2 layer suit colors



### Premium 2 layer suit colors

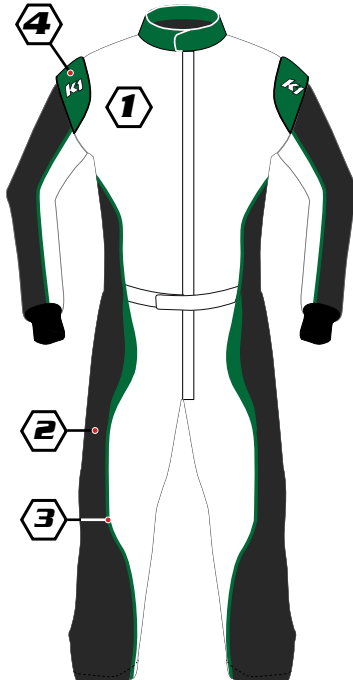
All standard colors plus:



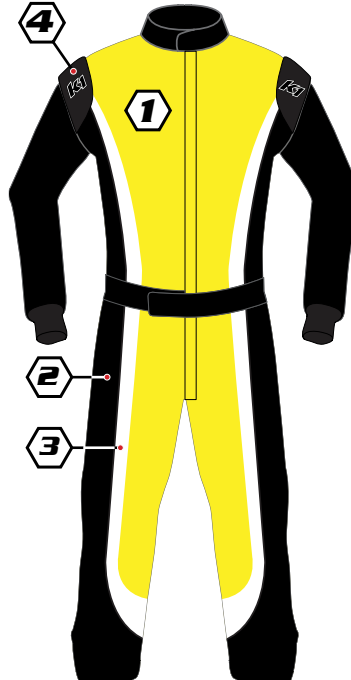
Colors shown on suits are for reference only and are to be chosen in the space below



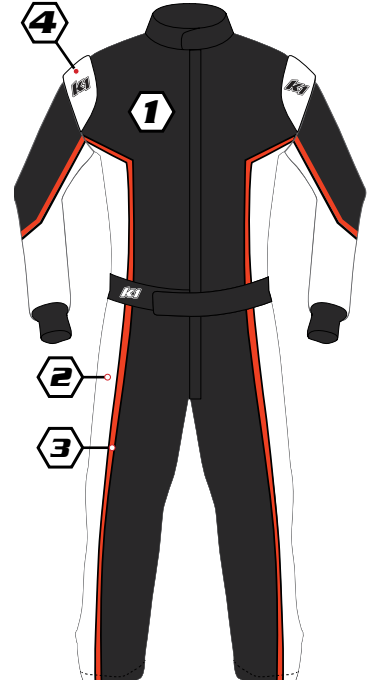
○ Design #1



○ Design #2



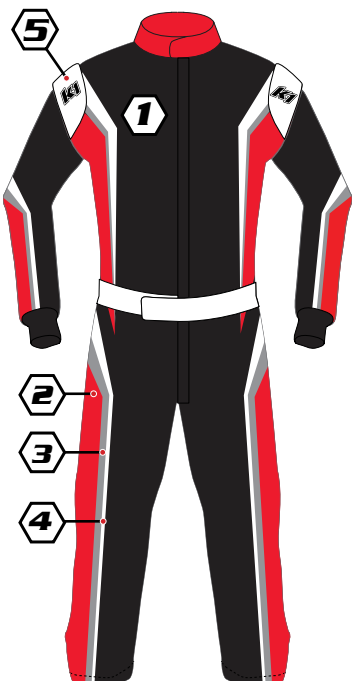
○ Design #3



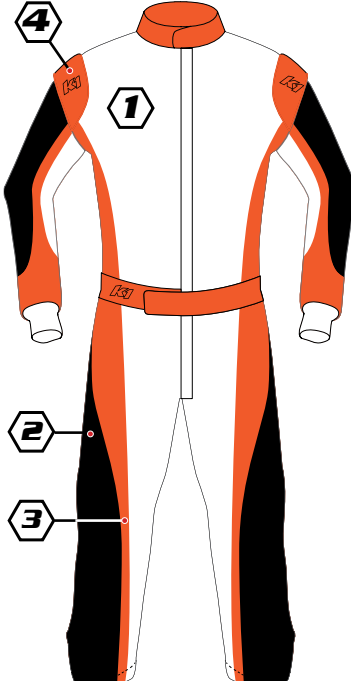
○ Design #4



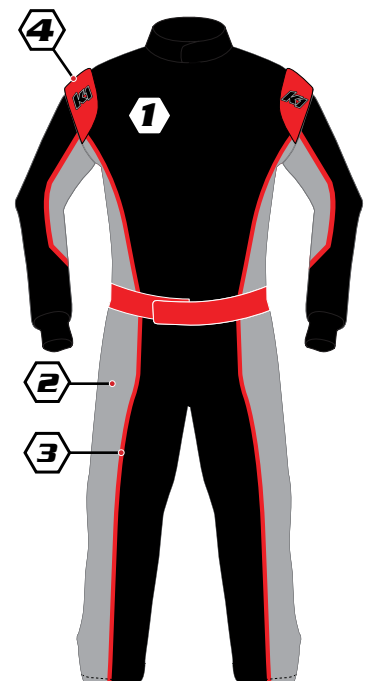
○ Design #5



○ Design #6



○ Design #7



○ Design #8

### COLORS

Color 1: \_\_\_\_\_  
Color 2: \_\_\_\_\_  
Color 3: \_\_\_\_\_  
Color 4: \_\_\_\_\_  
Color 5: \_\_\_\_\_

### PIPING COLOR

Collar: \_\_\_\_\_  
Epaulets: \_\_\_\_\_  
Belt: \_\_\_\_\_

### ADDITIONAL INFO

Name on belt \_\_\_\_\_  
Flag on belt \_\_\_\_\_  
Wrist cuff color \_\_\_\_\_  
Collar color \_\_\_\_\_



## Suit Design Options

A color chart consisting of 11 hexagonal color swatches arranged in two rows. The top row contains five swatches: BLUE (dark blue), PURPLE (dark purple), RED (red), BLACK (black), and GRAPHITE (dark grey). The bottom row contains six swatches: GREY (medium grey), LT.GREY (light grey), WHITE (white), PINK (pink), ORANGE (orange), and YELLOW (yellow). Each swatch is labeled with its corresponding color name in all caps.

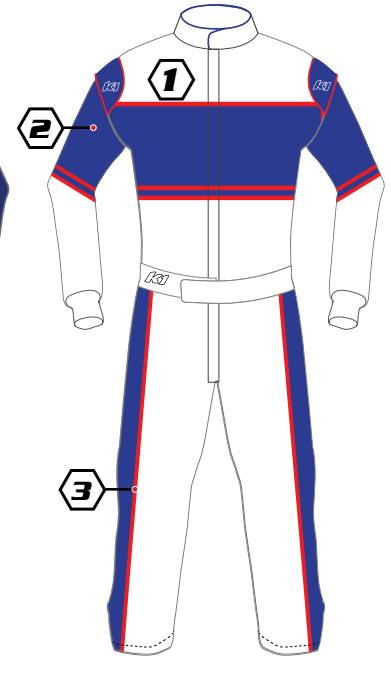
BLACK WHITE GREY

A set of eight color swatches arranged in two rows. The top row contains five swatches: Blue, Purple, Red, Black, and Graphite. The bottom row contains three swatches: Grey, Lt. Grey, and White. Each swatch is a regular hexagon with a thin black border.

Color calibration chart showing color patches and their corresponding color names:

Color Name	Color Patch
CARBON BLACK	Black patch
WHITE	White patch
FLO BLUE	Blue patch
FLO GREEN	Green patch
FLO YELLOW	Yellow patch
FLO ORANGE	Orange patch
FLO RED	Red patch
FLO PINK	Pink patch

Colors shown on suits are for reference only and are to be chosen in the space below



○ Design #12

### ADDITIONAL INFO

Name on belt \_\_\_\_\_  
Flag on belt \_\_\_\_\_  
Wrist cuff color \_\_\_\_\_  
Collar color \_\_\_\_\_

[illegible]