



Digital Tire Gauges #50358, 53028 0-125 psi

11/13

# QuickStart Instructions

Turn on & **push Zero button if needed**. Maximum pressure is 125 psi. Readout is to .5 psi. Gauge shuts off automatically if not in use (pressure changes).

Press the **ON** button just hard enough to turn the unit on.

Excessive pressure is not needed and can cause premature wear on the button.

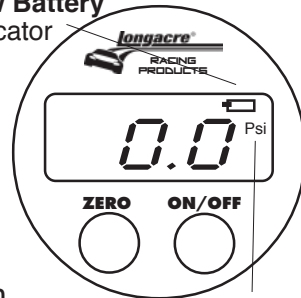
Battery indicator is on the upper right side of the display. When needed replace with 2) quality "AAA" alkaline batteries. Door is on back of gauge. Pull rubber bumper back for access.

DO NOT DROP THE UNIT OR GET IT WET. DO NOT EXPOSE TO STRONG ELECTRIC OR MAGNETIC FIELDS. (caster camber gauge magnets?)

**EXCESSIVE PRESSURE MAY DAMAGE THE GAUGE. See rating.**

**TO CONVERT TO METRIC** turn unit on, then push and hold ZERO until it flashes. Release ZERO, then push again to change. Units are displayed on the right side. Options are: psi, BAR, & kPa. When you get what you want the gauge reverts to normal function in 3 seconds and stays until you change it again.

Low Battery indicator



Units